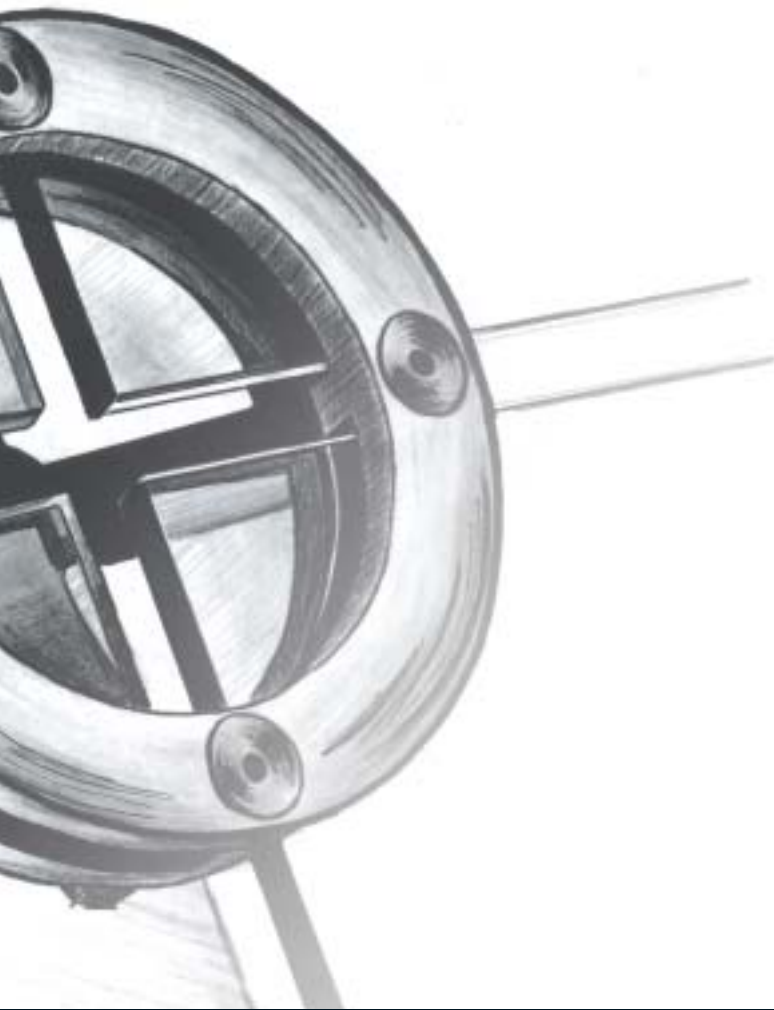


A detailed 3D cutaway rendering of a door lock mechanism. The outer door frame is shown in a light grey metallic finish. Inside, the lock cylinder is cut away to reveal the internal components, including the plug, pins, and the bolt assembly. The bolt is shown in a vibrant cyan color, extending through the door. The background is a solid, bright blue. A white rectangular box is overlaid on the left side of the image, containing the text "DORMA LOOP".

DORMA LOOP



Unmistakable: the new LOOP look

Architects and clients have been voicing demands for more competitively priced, attractive glass connection elements – and now LOOP has arrived to provide an innovative response.

The new individualistic solution for vertical glazing systems offers impressively solid technology plus easy handling.

LOOP grips and connects the glass panels in both internal and external applications. And the system is already leaving its circular mark in modern glass construction projects.

Without corners and edges, LOOP provides an ideal counterbalance to straight-lined glass panel arrangements. And without the need for any drilling in the glass.

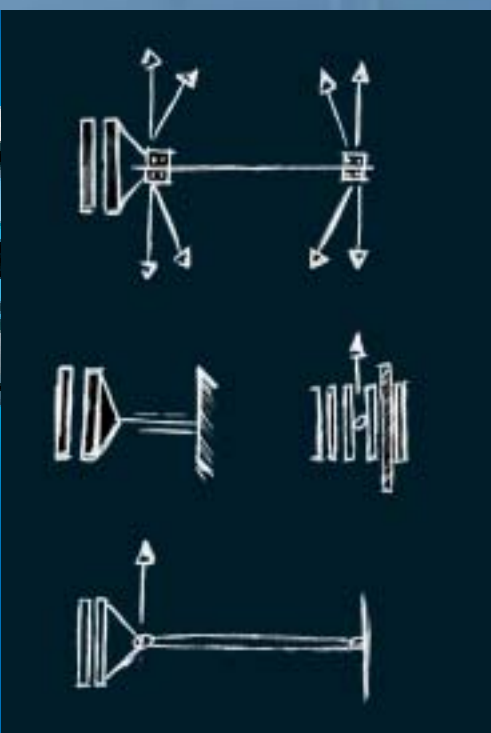
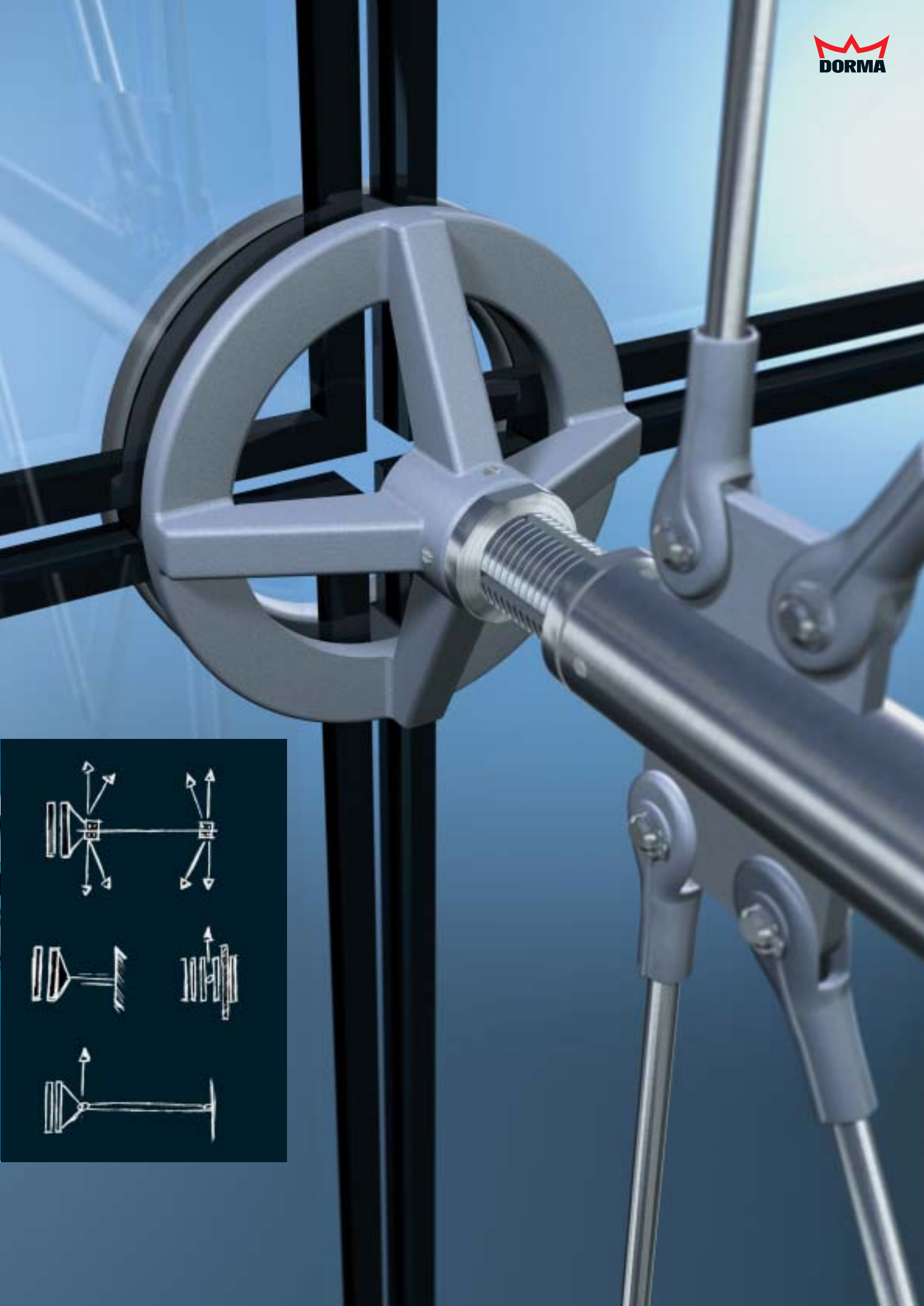
A sophisticated, integrated system that offers simple installation and adjustment. And because strict adherence to DIN specifications was a primary objective during the product development phase, overcoming approval barriers in building projects should be an easy matter. Overall a convincing and thoroughly rounded solution.

Clamped rather than drilled

LOOP needs no drilling or machining of the glass and saves both time and money during installation. Glass panels of all types and thicknesses are connected by the retaining ring of powder-coated steel with just the right amount of grip pressure. The material and functional principle keep the system price for glass, fittings and installation remarkably low. In addition, there is a wide range of possibilities for wall, floor

and ceiling connection: ideally designed structural elements provide a reliable hold for tie rods or cable-type bracing arrangements. The patented system is just as suitable for bracket-mounted cold facades as they are for single-walled warm facades, and has been approved in accordance with the requirements of DIN 18516, Part 4 as a solution for rear-ventilated external wall claddings.





Postal address:
DORMA-Glas GmbH
Postfach 32 68
32076 Bad Salzflun
Germany

Location:
Max-Planck-StraÙe 37-43
32107 Bad Salzflun
Germany

FON ++49 (0) 52 22/9 24-0
FAX ++49 (0) 52 22/9 24-999

www.dorma-glas.com