



Functionality for the highest demands

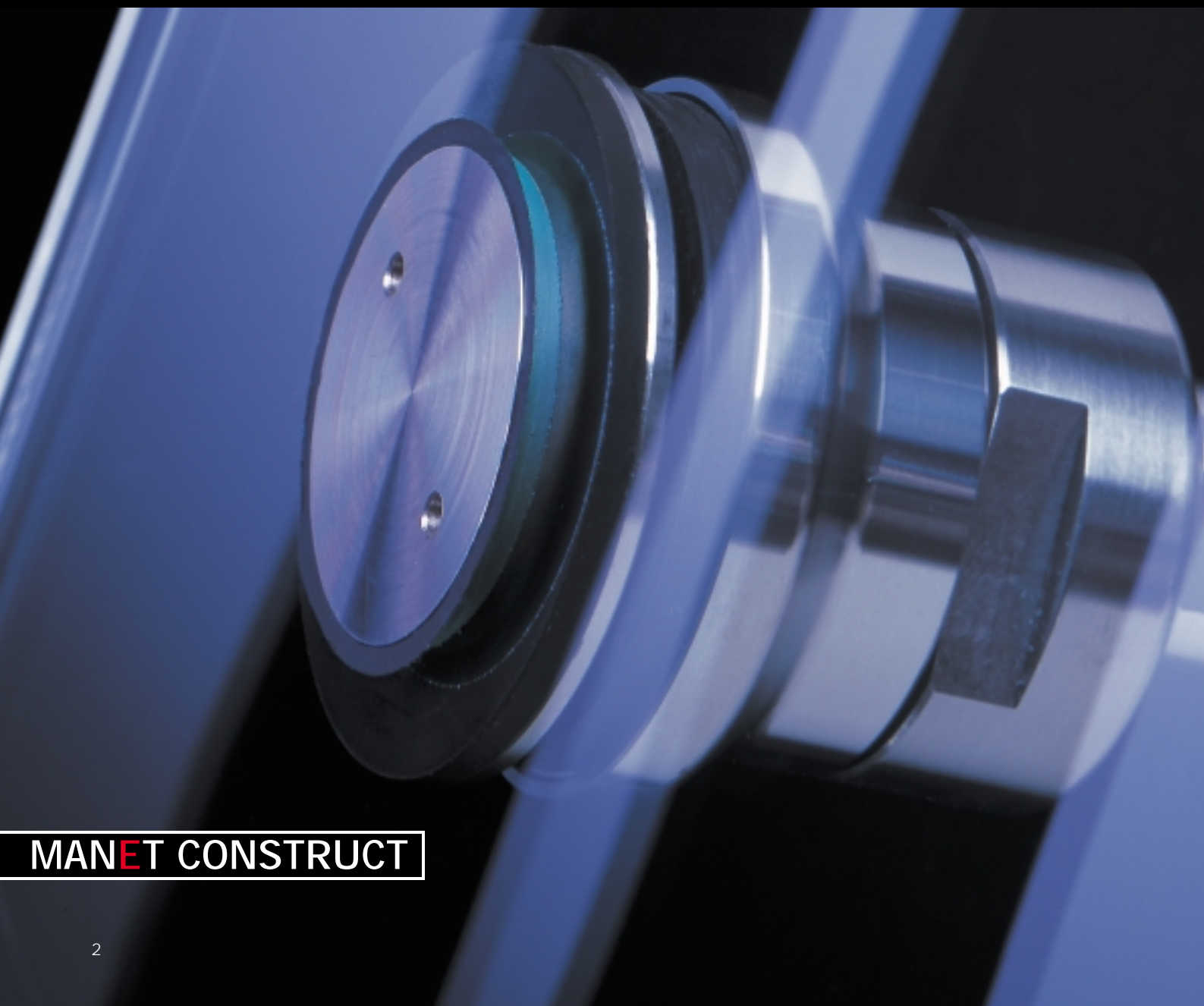
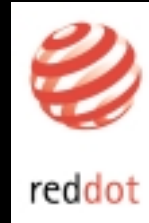
MANET CONSTRUCT

MANET CONSTRUCT

External and internal walls, façades and roofs of glass require construction systems that satisfy the highest demands in terms of functionality and aesthetic elegance.

MANET CONSTRUCT meets the specific requirements of all-glass systems by providing the sophisticated technology and harmonious design required. It is a system that truly sets new standards.

All the components of the MANET CONSTRUCT range are subjected to special quality verification requirements. In order to confirm their corrosion resistance, the stainless steels employed undergo a salt spray test.



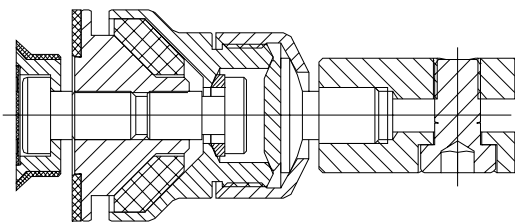
MANET CONSTRUCT

The Single-point Fixing

For controlled transmission of tensile and compressive forces to the substructure: The MANET CONSTRUCT single-point fixings – available in two sizes – are supreme performers that offer particularly wide-ranging application possibilities. An angular adjustment of up to 5°, or even 7° (depending on the type), can be implemented via the 3D articulated joint to compensate for unevenness in the

substructure. And slide-adjustable components are also available that allow for drilled hole alignment tolerances of +/- 3 millimetres. In order to dissipate stresses in the glass due to deformation arising from, for example, wind or traffic loads, the single-point fixing features an interfacial elastomer pad. This bearing allows a maximum possible angular variation of 5°.

The elastomer material also ensures optimum stress distribution under critical loading in the fixing area. Thanks to its resilience, it provides an effective countermeasure to glazing deformation. So particularly large glass spans can be implemented. The elastomer padding has been tested for longevity and certified by the Freudenberg Forschungsdienste KG physical testing laboratory in Weinheim, Germany.



Single-point fixings with male and female threads of various sizes, or with an articulated joint, are available to provide different types of connection for attachment either to the building substructure (by others) or to the MANET CONSTRUCT Spider.

The Spider

A fascinating design element that enhances any façade: Whether in straight-lined or segmented façades, or circular configurations with curved glazing, the MANET CONSTRUCT Spider – available in two sizes and with one to four arms – both enhances design and adds safety to the connection.

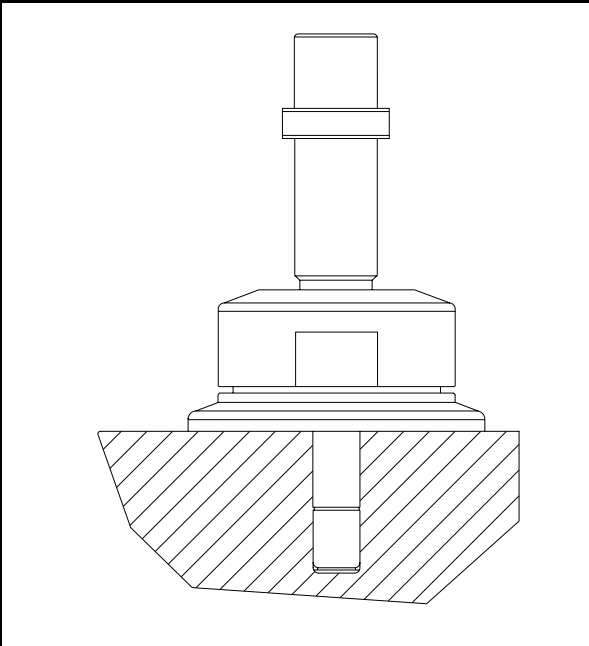
The articulated joint with its three-dimensional movement in the Spider hub helps compensate for building tolerances.

The arms of the Spider evenly absorb the load at all the fixing points while the resilient single-point fixings compensate for thermal expansion and glass panel deformation.

The connection to the substructure can, for example, take the form of a post adapter.

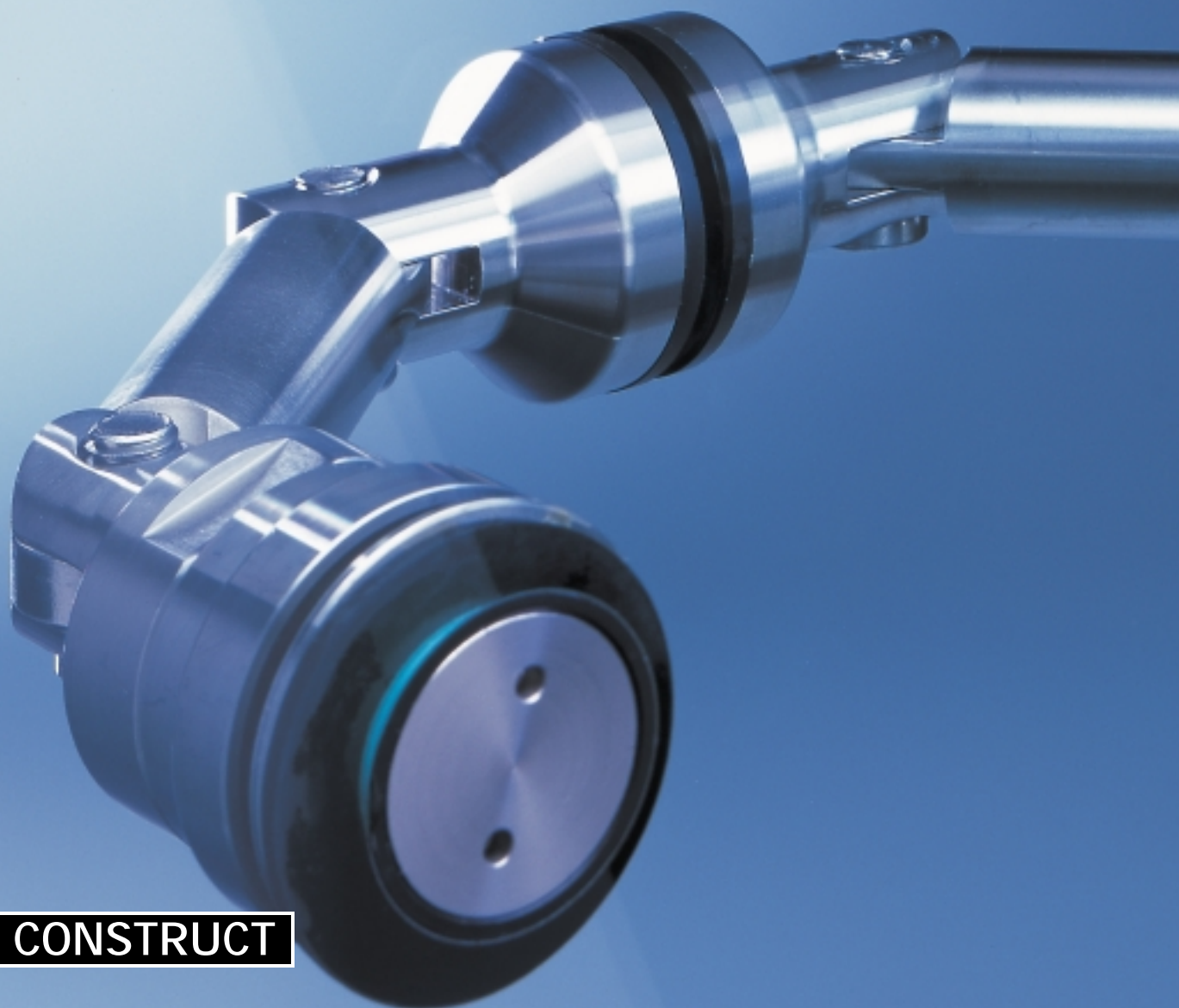


MANET CONSTRUCT

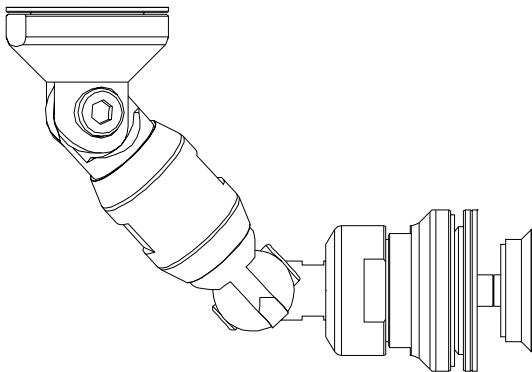


The Connection System

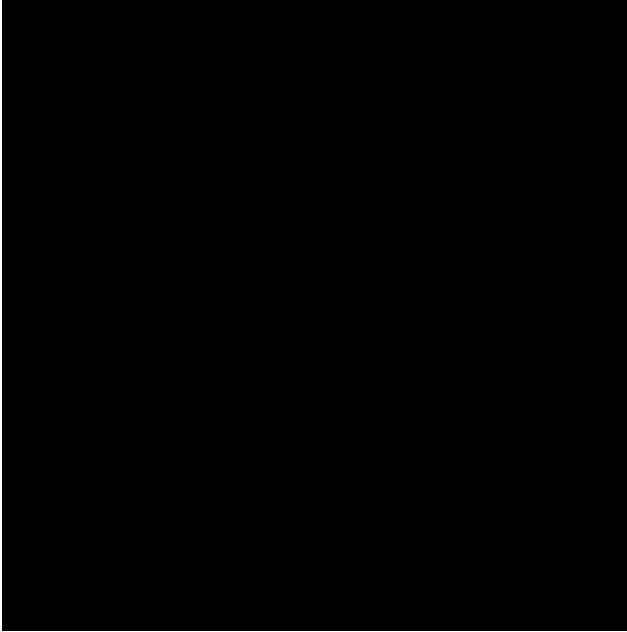
The MANET CONSTRUCT connection system enables glass to be mounted to glass or to building substructures. The components, depending on the type involved, not only perform the inter-connection task but also a range of load-bearing functions.



MANET CONSTRUCT



The system is particularly impressive due to its flexibility: As alternatives to rigid arms, arms with adjustable centre sections can be installed between the single-point fixings or wall connections. Equipped with right-hand and left-hand threads, they enable tolerances to be evened out at any phase of assembly. Both arm types can be combined with the different single-point fixing sizes. Aside from the flexible fixings with their resilient padding, special rigid single-point fixings are also available for this system.



DORMA GlasTec GmbH
Leonardo-da-Vinci-Weg 6 - 8
D-32760 Detmold
Tel. +49 5231 33926
Fax +49 5231 39618
www.dorma-glastec.de